

■ Seoul(Gangbuk) 2D1N Bus Tour

■ DAY 1(13, AUG)

	08:00	BEXCO [Tour Start]
	15:00~16:00	[Library Visit] : Public Library Jeongdok Public Library
	16:30~17:30	[Library Visit] : National Library National Assembly Library
	18:00~20:00	[Dinner & Sightseeing] The Hyundai(department store)
	20:30~	[Stay] hotel(near Seoul Station)

Tour Price

- Single Room: 1PAX-KRW 300,000
- Twin Room (Shared): 1PAX - KRW 350,000

Included

- Transportation (25seated Bus)
- English-speaking guide
- Hotel accommodation
- Admission fees
- Dinner on Day 1
- Breakfast and Lunch on Day 2

Not Included

- Lunch on Day 1
- Dinner on Day 2
- Personal expenses
- Travel insurance (optional)

NOTE

- Maximum of 20 participants can be accommodated.
- Reservations will be accepted on a first-come, first-served basis.
- Advance registration is required. Further details will be announced soon

■ Seoul(Gangbuk) 2D1N Bus Tour

■ DAY 2(14, AUG)

	09:00	Hotel [Tour Start]
	09:30~10:30	[Library Visit] : Public Library Seoul Metropolitan Library
	10:30~12:00	[Sightseeing] Deoksugung Palace
	12:00~13:00	[Lunch & Sightseeing] Seoul Cityhall area
	13:00~15:00	[Sightseeing] Gyeongbokgung Palace
	21:00	BEXCO [Tour End]

Tour Price

- Single Room: 1PAX-KRW 300,000
- Twin Room (Shared): 1PAX - KRW 350,000

Included

- Transportation (25seated Bus)
- English-speaking guide
- Hotel accommodation
- Admission fees
- Dinner on Day 1
- Breakfast and Lunch on Day 2

Not Included

- Lunch on Day 1
- Dinner on Day 2
- Personal expenses
- Travel insurance (optional)

NOTE

- Maximum of 20 participants can be accommodated.
- Reservations will be accepted on a first-come, first-served basis.
- Advance registration is required. Further details will be announced soon

■ Seoul(Gangnam) 2D1N Bus Tour

■ DAY 1(13, AUG)



08:00

BEXCO [Tour Start]



15:00~16:00

**[Library Visit] : National Library
National Library of Korea**



16:30~17:30

**[Library Visit] : National Library
National Library for Children and Young Adults**



18:00~20:00

[Dinner & Sightseeing]
Insadong



20:30~

[Stay]
hotel(near Seoul Station)

Tour Price

- Single Room: 1PAX-KRW 300,000
- Twin Room (Shared): 1PAX - KRW 350,000

Included

- Transportation (25seated Bus)
- English-speaking guide
- Hotel accommodation
- Admission fees
- Dinner on Day 1
- Breakfast and Lunch on Day 2

Not Included

- Lunch on Day 1
- Dinner on Day 2
- Personal expenses
- Travel insurance (optional)

NOTE

- Maximum of 20 participants can be accommodated.
- Reservations will be accepted on a first-come, first-served basis.
- Advance registration is required. Further details will be announced soon

■ Seoul(Gangnam) 2D1N Bus Tour

■ DAY 2(14, AUG)



09:00

Hotel [Tour Start]



09:30~11:30

[Sightseeing]
Gyeongbokgung Palace



12:00~14:00

[Lunch & Sightseeing]
Bukchon Hanok Village



20:00

BEXCO [Tour End]

Tour Price

- Single Room: 1PAX-KRW 300,000
- Twin Room (Shared): 1PAX - KRW 350,000

Included

- Transportation (25seated Bus)
- English-speaking guide
- Hotel accommodation
- Admission fees
- Dinner on Day 1
- Breakfast and Lunch on Day 2

Not Included

- Lunch on Day 1
- Dinner on Day 2
- Personal expenses
- Travel insurance (optional)

NOTE

- Maximum of 20 participants can be accommodated.
- Reservations will be accepted on a first-come, first-served basis.
- Advance registration is required. Further details will be announced soon

■ Gyeonggi(Paju) 2D1N Bus Tour

■ DAY 1(13, AUG)



08:00

BEXCO [Tour Start]



16:00~18:00

**[Library Visit] : Public Library
Paju City Munsan Library**



19:00~21:00

[Dinner & Sightseeing]
Paju Outlet



21:30~

[Stay]
Hotel(near ilsan Area)

Tour Price

- Single Room: 1PAX-KRW 330,000
- Twin Room (Shared): 1PAX - KRW 380,000

Included

- Transportation (25seated Bus)
- English-speaking guide
- Hotel accommodation
- Admission fees
- Dinner on Day 1
- Breakfast and Lunch on Day 2

Not Included

- Lunch on Day 1
- Dinner on Day 2
- Personal expenses
- Travel insurance (optional)

NOTE

- Maximum of 20 participants can be accommodated.
- Reservations will be accepted on a first-come, first-served basis.
- Advance registration is required. Further details will be announced soon

■ Gyeonggi(Paju) 2D1N Bus Tour

■ DAY 2(14, AUG)



09:00

Hotel [Tour Start]



10:00~11:00

[Sightseeing]
Odusan Unification Observatory



11:30~13:30

[Lunch & Sightseeing]
Imjingang Dokgaedari bridge



14:00~15:00

[Sightseeing]
Heyri Art Valley



23:00

BEXCO [Tour End]

Tour Price

- Single Room: 1PAX-KRW 330,000
- Twin Room (Shared): 1PAX - KRW 380,000

Included

- Transportation (25seated Bus)
- English-speaking guide
- Hotel accommodation
- Admission fees
- Dinner on Day 1
- Breakfast and Lunch on Day 2

Not Included

- Lunch on Day 1
- Dinner on Day 2
- Personal expenses
- Travel insurance (optional)

NOTE

- Maximum of 20 participants can be accommodated.
- Reservations will be accepted on a first-come, first-served basis.
- Advance registration is required. Further details will be announced soon

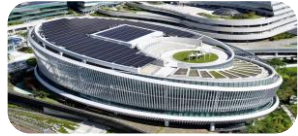
■ Gyeonggi(Suwon) 2D1N Bus Tour

■ DAY 1(13, AUG)



08:00

BEXCO [Tour Start]



15:00~16:00

**[Library Visit] : Public Library
Gyeonggi Library**



16:30~18:00

[Sightseeing]
Suwon Hwaseong Museum



18:00~20:00

[Dinner & Sightseeing]
Suwon chicken street



20:30~

[Stay]
Hotel(near Suwon Area)

Tour Price

- Single Room: 1PAX-KRW 320,000
- Twin Room (Shared): 1PAX - KRW 390,000

Included

- Transportation (25seated Bus)
- English-speaking guide
- Hotel accommodation
- Admission fees
- Dinner on Day 1
- Breakfast and Lunch on Day 2

Not Included

- Lunch on Day 1
- Dinner on Day 2
- Personal expenses
- Travel insurance (optional)

NOTE

- Maximum of 20 participants can be accommodated.
- Reservations will be accepted on a first-come, first-served basis.
- Advance registration is required. Further details will be announced soon

■ Gyeonggi(Paju) 2D1N Bus Tour

■ DAY 2(14, AUG)



09:00

Hotel [Tour Start]



09:30~10:30

[Sightseeing]
Yeonmudae Post(Korean Traditional archery)



11:00~12:00

[Sightseeing]
Hwaseong Fortress Tourist Trolley



12:30~15:00

[Lunch & Sightseeing]
Hwaseong Haenggung Palace



22:00

BEXCO [Tour End]

Tour Price

- Single Room: 1PAX-KRW 320,000
- Twin Room (Shared): 1PAX - KRW 390,000

Included

- Transportation (25seated Bus)
- English-speaking guide
- Hotel accommodation
- Admission fees
- Dinner on Day 1
- Breakfast and Lunch on Day 2

Not Included

- Lunch on Day 1
- Dinner on Day 2
- Personal expenses
- Travel insurance (optional)

NOTE

- Maximum of 20 participants can be accommodated.
- Reservations will be accepted on a first-come, first-served basis.
- Advance registration is required. Further details will be announced soon